



United States  
Department of  
Agriculture

## Rural Development



CFCC Funding Fair, Chico

# Water & Environmental Programs Community Facilities Program

*July 9, 2019*

# Topics

- About USDA Rural Development
- Water and Environmental Programs (WEP)
- Community Facilities Programs (CF)
- Example Projects

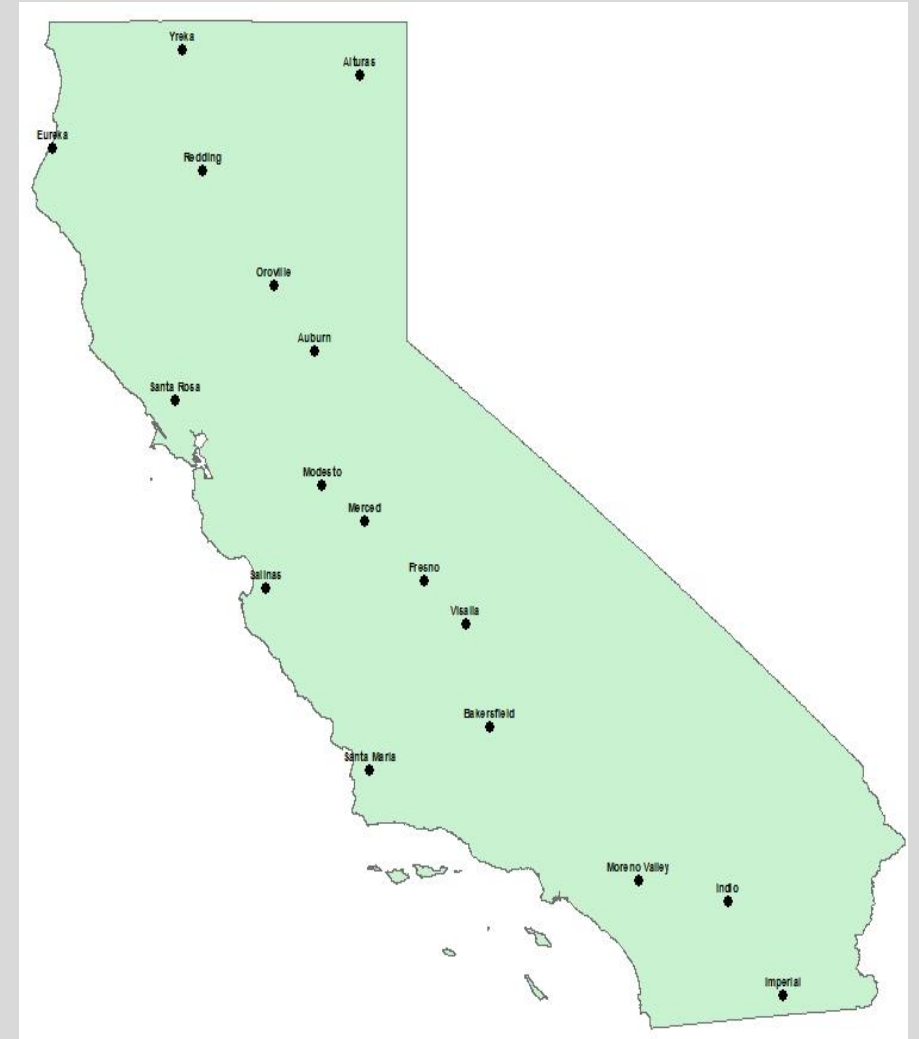
# USDA Investments - \$1.2 Billion FY18



# USDA Staff Available to Help

Find us online [www.rd.usda.gov/ca](http://www.rd.usda.gov/ca)

The screenshot shows the USDA Rural Development website for California. The header includes the USDA logo, the text "United States Department of Agriculture Rural Development", and navigation links for "About USDA", "Ask The Expert", "Help", and "En Español". A search bar is present. Below the header is a navigation menu with "Home", "About RD", "Programs & Services", "Browse by State", "Newsroom", "Publications", and "Contact Us". A red arrow points from the "Browse by State" menu item to the "Key Programs" section. The "California" page features a dark blue banner with the text "USDA invested more than \$1 billion in rural California last year." and a Twitter link "@CaliforniaRD". The "Key Programs" section lists various initiatives such as "Single Family Housing Guaranteed Loan Program", "Rural Business Development Grants", "Water & Waste Disposal Loan & Grant Program", and "Business & Industry Loan Guarantees".



# Water and Environmental Programs (WEP)

## Programs

- Circuit Rider Program
- **Emergency Community Water Assistance Grants**
- Grants for Rural and Native Alaskan Villages
- Household Water Well System Grants
- Individual Water & Wastewater Grants
- **SEARCH - Special Evaluation Assistance for Rural Communities and Households**
- Solid Waste Management Grants
- **Water & Waste Disposal Grants to Alleviate Health Risks on Tribal Lands and Colonias**
- **Water & Waste Disposal Loans & Grants**
- **Water & Waste Disposal Loan Guarantees**
- **Water & Waste Disposal Predevelopment Planning Grants**
- Water & Waste Disposal Revolving Loan Funds
- Water & Waste Disposal Technical Assistance & Training Grants



# WEP (Continued)

## Basic Eligibility

- Eligible Area: Project must serve rural areas. Cities, towns, unincorporated communities with a population less than 10,000 are considered rural.
  - Facility/Project can be located in a non-rural area, however USDA funds can only be used to fund the portion of the project that serves rural areas.
- Eligible Applicants:
  - Public bodies (cities, counties, special districts, authorities)
  - Non-profit organizations (mutual water companies, associations)
  - Federally Recognized American Indian Tribal Groups

# WEP (Continued)

## Basic Eligibility

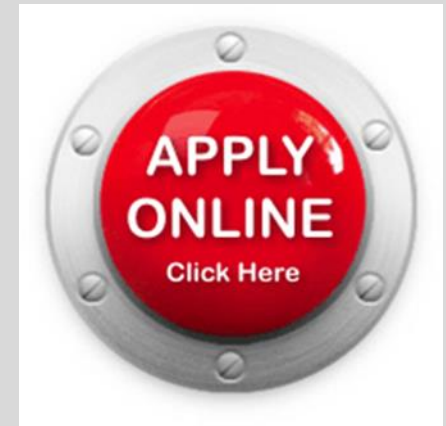
- Eligible Projects
  - Water and Wastewater Treatment Plants
  - Water Distribution Systems
  - Wastewater Collection Systems
  - Water Storage Tanks
  - Wastewater Pump Stations

# WEP Applications



Online Application Intake System for WEP

<https://rdapply.usda.gov>





# Community Facilities (CF)

## Programs

- **Community Facilities Direct Loans & Grants**
- **Community Facilities Loan Guarantees**
- **Community Facilities Relending Program**
- **Community Facilities Technical Assistance and Training Grant**
- **Economic Impact Initiative Grants**
- Rural Community Development Initiative Grants
- Tribal College Initiative Grants

# CF (Continued)

## Basic Eligibility

- Eligible Area: Cities, towns and unincorporated areas with population of 20,000 or less AND must primarily serve rural area(s)
- Eligible Applicant: Public bodies (cities, counties, special-purpose districts), non-profit organizations and federally recognized American Indian tribal groups
- Unable to obtain commercial credit

# CF (Continued)

## Terms and Type of Projects

- Up to 40 year terms
- Low interest rates
- Small grants for equipment. Grants range from \$30,000-\$40,000 provided on graduated scale based on population and MHI
- Community Health Care Projects
- Educational Projects
- Fire/Rescue/Public Safety Projects
- Public Building Projects
- Transportation Projects
- Other Projects

# CF Applications

## Application Process

- Pre-application
  - Used to determine applicant and project eligibility
  - Availability of other credit determined at this stage
- Application
  - Preliminary Architectural Report (PAR)
  - Environmental
  - [Financial Feasibility Evaluations](#)
  - [Appraisal](#)

# WEP Example 1

## Kettleman City CSD





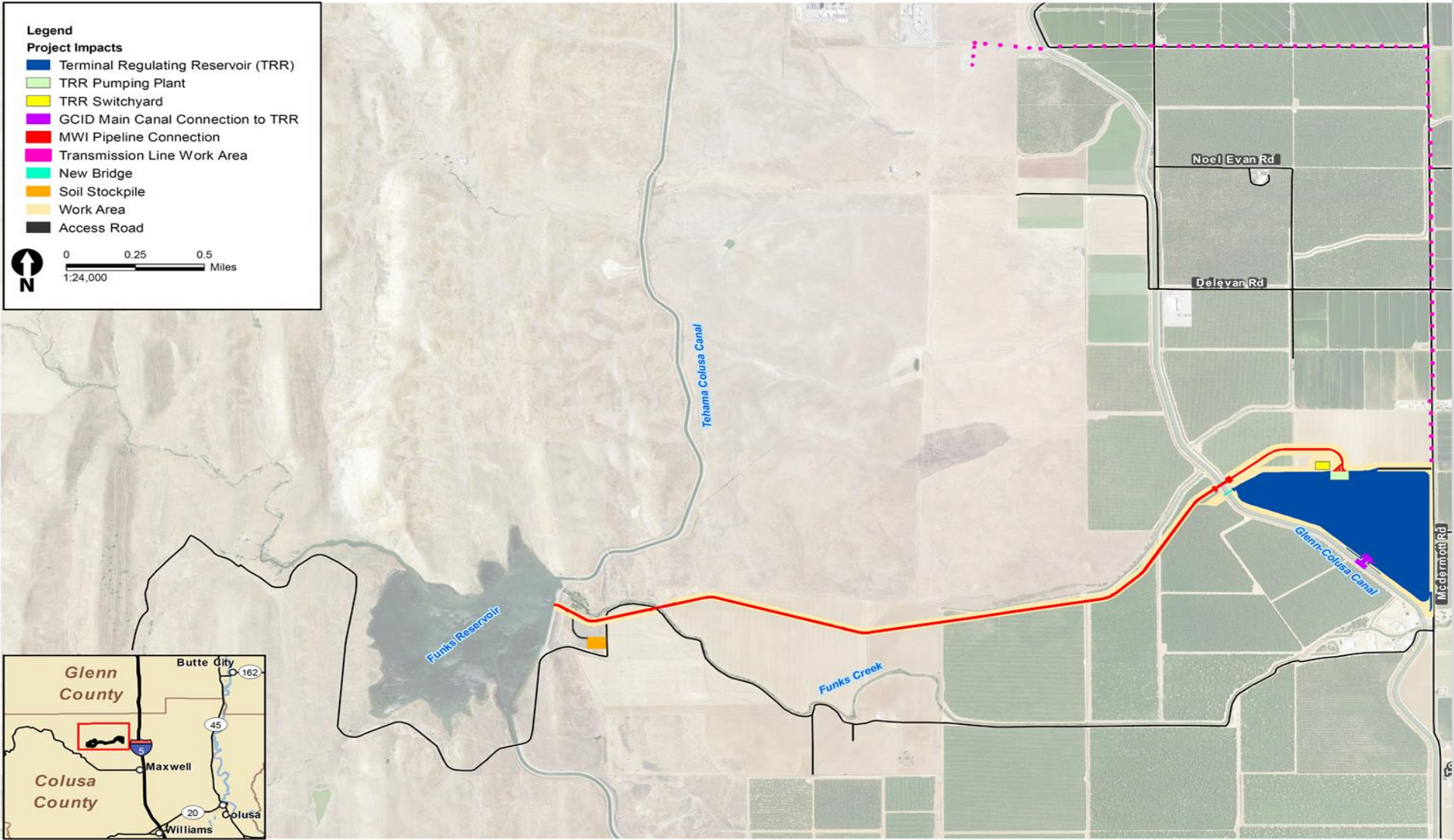
# WEP Example 2

## Los Osos Wastewater Project





# CF Example 1 Maxwell Water Intertie Facilities



# CF Example 2

## Open Door Community Health Centers







United States  
Department of  
Agriculture

## Rural Development



# Questions

*USDA Rural Development is committed to the future of rural communities.*